



Innovative machine and plant software for
all industries.



XAPI XPlant 7.7 is an object-oriented standard software that contains a block library with the SIMATIC WinCC process visualization system and is used to manage process-technological plants of any industry. Plant operators benefit from a tried and tested standard software and its block library for a fast and effective solution of a wide range of automation tasks combined with an increase in performance and efficiency as well as a reduction in the engineering effort and the associated project costs. The system platform with its modern architecture offers the ideal basis for a future-proof and economical solution.

ABSOLUTE TRANSPARENCY

The integrated diagnostic function (**XAPI X-SPS**Diagnose) and the flexible production analysis reduce time-to-market and plant downtime. The innovative software makes it possible to keep track of all important information at any time and simplifies monitoring and handling of the production operation, even remotely. **XAPI XPlant 7.7** is used on both new and already installed production lines.

FLEXIBLE AND POWERFUL

XAPI XPlant 7.7 includes a versatile **block library** and enables modular adaptation to a wide range of tasks and application areas, which has already proven itself in more than 500 systems. This means that a system can simply be extended or modernized in a functional or branch-specific way.

XAPI XPlant 7.7 offers a large number of **procedural functions** of process control engineering:

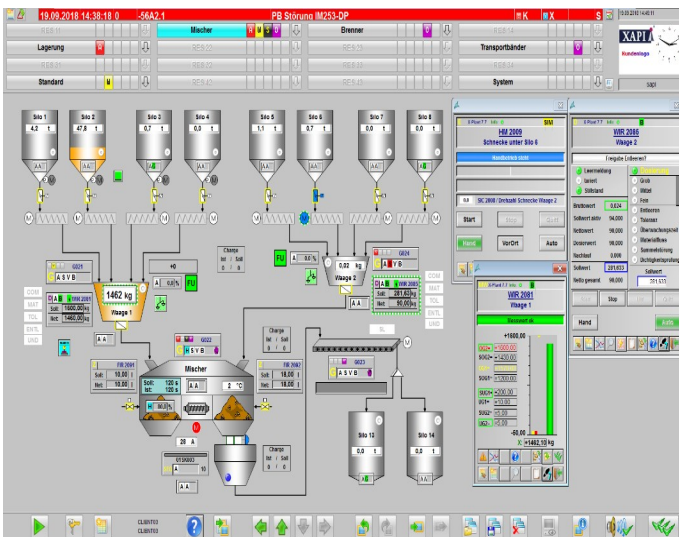
- It contains function blocks for PLC, WinCC faceplates and WinCC block icons (user objects).
- The library is integrated in the system environment of SIMATIC WinCC and is uniform.
- The **basic functions** include: **Steering- and Control function** (group, select, execute), **Drive functions** (valve, flap), **Measurement control functions** (controller, measured value), **Dosingfunctions** (counter, balance), **Diagnostic system functions** (PLC diagnostics), **Special functions** (step sequence), **Operating data acquisition** (hour counter).
- In the function blocks suitable for continuous and discontinuous processes, an operating and message behavior with plant-specific selectable or deselected block functions is implemented.

FUNCTIONS

- The **drive function** blocks, which control units such as motors or valves, have the operating mode "on-site operation" in addition to the automatic and manual operating modes. This makes it possible to operate aggregates directly "on site" and display them in the process control system.
- In the case of the **block signals**, a differentiation is made in the function blocks between interlocking, operating condition, switch release and protection release
- The **process operations** and **parameter changes** always require confirmation by the operator (two-step operation) in order to rule out incorrect operation.
- The powerful **reporting system** captures and stores **process messages** and **local events in archives** and makes them available filtered and sorted as needed. The messages are classified according to the causes and stored as the following message classes: Process technology, process control and operator messages.
- The **extensive user management (including rights management)** enables a customer-specific setting for access to the user interface, visualization, parameterization and configuration both during configuration and during runtime.
- The **multilingual use possibility** allows global engineering and the cooperation of international teams.

PURPOSE / BENEFITS

- **Efficiency:** the **user-friendly operation** allows a comfortable and safe management of the process with versatile technical diagnostic possibilities for quick analysis and optimization of the driving style of the production plant. Minimized downtime and thus higher productivity are achieved.
- **Innovation:** a **clear representation of the condition of the plant** is achieved with the 1-click operation. All production data is immediately visible and facilitates fast fault finding and fault diagnosis.
- A **quick commissioning** in order integrated simulation.
- **Standardized interfaces** between modules minimize programming errors and enable simplified implementation of automation solutions.
- **Long-time proven software** for versatile applications is the key to success and guarantees high system availability.
- **Simple scalability: technology- and industry-neutral** design, modular constructed and easy to expand, enable investment security.
- Safety and productivity of the system will increase in the long term.



TECHNOLOGY

- One server license per workstation.
- One server license depending on the number of PLCs connected.
- Standardized interface to third-party systems (databases, Acron, PXTrend, XConnect, XData).

XAPI Software GmbH

Winternheimer Strasse 33, 67346 Speyer
Tel +49 6232 / 6018-0, Fax +49 6232 / 6018-50
info@xapi.de, www.xapi.de

Contact us, we will inform and advise you!

